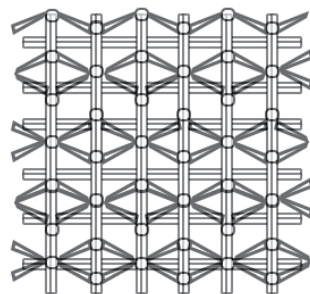


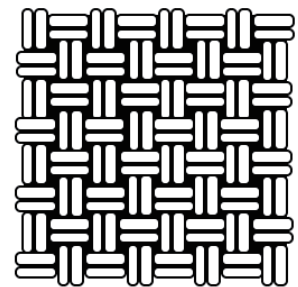
PVC Heavy Duty Mesh Material is made of heated PVC resin paste and evenly coated with various additives on high-strength polyester substrate. After drying and curing, this material is characterized by high weight, high thickness, good durability, outstanding tear resistance and high strength. It can be used for heavy transportation, large-area coverage, and its unique network structure makes it waterproof, windproof and breathable, which is a significant material in construction, agriculture, transportation, packaging and other fields.



Professional sales team, over 15 years experience in producing PVC Heavy Duty Mesh Material, Over 10 years OEM&ODM finished product experience, we are a factory produces pvc tarpaulin in Haining, The greatest feature of our PVC Heavy Duty Mesh Material is stable and durable quality.



basefabric construction



woven polyester fabric

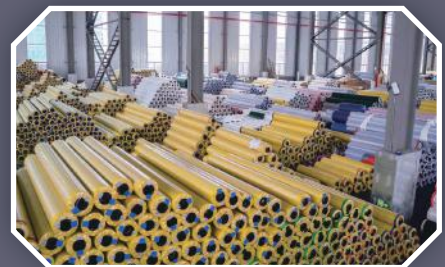
You can get the reasonable price with best quality here.

printing mesh

| Spec | Properties | Average value |
|--------------------|---------------------|---------------|
| 1000D*1000D 9*9 | Weight | 250g |
| | Break Strength Warp | 1100N/5cm |
| | Break Strength Weft | 1100N/5cm |
| | Tear Strength Warp | 230N |
| | Tear Strength Weft | 220N |
| | transmittance | 52% |
| | permeability | 3199mm/s |

| Spec | Properties | Average value |
|---------------------|---------------------|---------------|
| 1000D*1000D 9*13 | Weight | 260g |
| | Break Strength Warp | 1100N/5cm |
| | Break Strength Weft | 1300N/5cm |
| | Tear Strength Warp | 300N |
| | Tear Strength Weft | 280N |
| | transmittance | 39.50% |
| | permeability | 2945mm/s |
| | temperature | -30—70 |

| Spec | Properties | Average value |
|---------------------|---------------------|---------------|
| 500D*1000D 18*12 | Weight | 250g |
| | Break Strength Warp | 900N/5cm |
| | Break Strength Weft | 1050N/5cm |
| | Tear Strength Warp | 170N |
| | Tear Strength Weft | 180N |
| | transmittance | 35.8% |
| | permeability | 3979mm/s |
| | temperature | -30—70 |



Pruduc specifications of PVC Heavy Duty Mesh Material Recommend



| Spec | Properties | Average value |
|--------------------|---------------------|---------------|
| 840D*500D 10*11 | Weight | 400g |
| | Break Strength Warp | 3100N/5cm |
| | Break Strength Weft | 1800N/5cm |
| | Tear Strength Warp | 190N |
| | Tear Strength Weft | 110N |
| | transmittance | 18.30% |
| | permeability | 1403mm/s |

| Spec | Properties | Average value |
|------|---------------------|---------------|
| 1212 | Weight | 150g |
| | Break Strength Warp | 1250N/5cm |
| | Break Strength Weft | 1250N/5cm |
| | Tear Strength Warp | 450N |
| | Tear Strength Weft | 427N |
| | transmittance | |
| | permeability | |

| Spec | Properties | Average value |
|----------------------|---------------------|---------------|
| 1000D*1000D 12*12 | Weight | 260g |
| | Break Strength Warp | 1250N/5cm |
| | Break Strength Weft | 1250N/5cm |
| | Tear Strength Warp | 300N |
| | Tear Strength Weft | 310N |
| | transmittance | 44% |
| | permeability | 2711mm/s |

| Spec | Properties | Average value |
|--------------------|---------------------|---------------|
| 1000D*1000D 6*6 | Weight | 220g |
| | Break Strength Warp | 850N/5cm |
| | Break Strength Weft | 820N/5cm |
| | Tear Strength Warp | 180N |
| | Tear Strength Weft | 189N |
| | transmittance | 59% |
| | permeability | 6983mm/s |





| Spec | Properties | Average value |
|---------------------|---------------------|---------------|
| 1000D*1000D 18*9 | Weight | 270g |
| | Break Strength Warp | 2200N/5cm |
| | Break Strength Weft | 1100N/5cm |
| | Tear Strength Warp | 350N |
| | Tear Strength Weft | 230N |
| | transmittance | 33.50% |
| | permeability | 2260mm/s |

| Spec | Properties | Average value |
|--------------------|---------------------|---------------|
| 500D*500D 18*20 | Weight | 220g |
| | Break Strength Warp | 1100N/5cm |
| | Break Strength Weft | 1100N/5cm |
| | Tear Strength Warp | 230N |
| | Tear Strength Weft | 220N |
| | transmittance | 31.20% |
| | permeability | 2080mm/s |

| Spec | Properties | Average value |
|----------------------|---------------------|---------------|
| 1000D*1000D 12*12 | Weight | 300g |
| | Break Strength Warp | 1852N/5cm |
| | Break Strength Weft | 1497N/5cm |
| | Tear Strength Warp | 350N |
| | Tear Strength Weft | 176N |
| | transmittance | |
| | permeability | |

printing mesh

color mesh

| Spec | Properties | Average value |
|---------------------|---------------------|---------------|
| 500D*1000D 18*14 | Weight | 330g |
| | Break Strength Warp | 2377.7N/5cm |
| | Break Strength Weft | 2327.8N/5cm |
| | Tear Strength Warp | 392.7N |
| | Tear Strength Weft | 186.3N |
| | transmittance | |
| | permeability | |

| Spec | Properties | Average value |
|----------------------|---------------------|---------------|
| 1000D*1000D 14*14 | Weight | 250 ± 10g |
| | Break Strength Warp | 1650N/5cm |
| | Break Strength Weft | 1691N/5cm |
| | Tear Strength Warp | 260N |
| | Tear Strength Weft | 299N |
| | transmittance | |
| | permeability | |

| Spec | Properties | Average value |
|----------------------|---------------------|---------------|
| 1300D*1300D 13*13 | Weight | 260 ± 10g |
| | Break Strength Warp | 1864N/5cm |
| | Break Strength Weft | 1845N/5cm |
| | Tear Strength Warp | 363N |
| | Tear Strength Weft | 350N |
| | transmittance | |
| | permeability | |

| Spec | Properties | Average value |
|-----------------|---------------------|---------------|
| 4-pin checkered | Weight | 500 ± 10g |
| | Break Strength Warp | 531N/5cm |
| | Break Strength Weft | 326N/5cm |
| | Tear Strength Warp | 30N |
| | Tear Strength Weft | 28N |
| | transmittance | |
| | permeability | |

| Spec | Properties | Average value |
|--------------------|---------------------|---------------|
| 1000D*1000D 9*9 | Weight | 240 ± 10g |
| | Break Strength Warp | 1261N/5cm |
| | Break Strength Weft | 1020N/5cm |
| | Tear Strength Warp | 222N |
| | Tear Strength Weft | 138N |
| | transmittance | |
| | permeability | |

| Spec | Properties | Average value |
|--------------------|---------------------|---------------|
| 840D*840D 18*14 | Weight | 300g |
| | Break Strength Warp | 2059N/5cm |
| | Break Strength Weft | 1444N/5cm |
| | Tear Strength Warp | 294.2N |
| | Tear Strength Weft | 115.8N |
| | transmittance | 40.6% |
| | permeability | |

| Spec | Properties | Average value |
|----------------------|---------------------|---------------|
| 1000D*1000D 12*12 | Weight | 260 ± 10g |
| | Break Strength Warp | 1100N/5cm |
| | Break Strength Weft | 943N/5cm |
| | Tear Strength Warp | 238N |
| | Tear Strength Weft | 168N |
| | transmittance | |
| | permeability | |

| Spec | Properties | Average value |
|--------------------|---------------------|---------------|
| 1000D*1000D 9*9 | Weight | 450 ± 20g |
| | Break Strength Warp | 2540N/5cm |
| | Break Strength Weft | 2930N/5cm |
| | Tear Strength Warp | 280N |
| | Tear Strength Weft | 287N |
| | transmittance | |
| | permeability | |

color mesh

| Spec | Properties | Average value |
|--------------------|---------------------|---------------|
| 1000D*1000D 6*6 | Weight | 500g |
| | Break Strength Warp | 2880N/5cm |
| | Break Strength Weft | 2780N/5cm |
| | Tear Strength Warp | 465N |
| | Tear Strength Weft | 440N |
| | transmittance | |
| | permeability | |

| Spec | Properties | Average value |
|--------------------|---------------------|---------------|
| 1000D*1000D 6*6 | Weight | 500g |
| | Break Strength Warp | 2880N/5cm |
| | Break Strength Weft | 2780N/5cm |
| | Tear Strength Warp | 465N |
| | Tear Strength Weft | 440N |
| | transmittance | |
| | permeability | |

| Spec | Properties | Average value |
|--------------------|---------------------|---------------|
| 250D*250D 24*24 | Weight | 130 ± 10g |
| | Break Strength Warp | 503N/5cm |
| | Break Strength Weft | 423N/5cm |
| | Tear Strength Warp | 93N |
| | Tear Strength Weft | 82N |
| | transmittance | |
| | permeability | |

| Spec | Properties | Average value |
|--------------------|---------------------|---------------|
| 250D*250D 24*24 | Weight | 130 ± 10g |
| | Break Strength Warp | 503N/5cm |
| | Break Strength Weft | 423N/5cm |
| | Tear Strength Warp | 93N |
| | Tear Strength Weft | 82N |
| | transmittance | |
| | permeability | |

| Spec | Properties | Average value |
|--------------------|---------------------|---------------|
| 840D*840D 20*12 | Weight | 320 ± 10g |
| | Break Strength Warp | 2435N/5cm |
| | Break Strength Weft | 1340N/5cm |
| | Tear Strength Warp | 262N |
| | Tear Strength Weft | 227N |
| | transmittance | |
| | permeability | |

| Spec | Properties | Average value |
|--------------------|---------------------|---------------|
| 840D*840D 20*12 | Weight | 320 ± 10g |
| | Break Strength Warp | 2435N/5cm |
| | Break Strength Weft | 1340N/5cm |
| | Tear Strength Warp | 262N |
| | Tear Strength Weft | 227N |
| | transmittance | |
| | permeability | |

| Spec | Properties | Average value |
|--------------------|---------------------|---------------|
| 1000D*1000D 6*6 | Weight | 500g |
| | Break Strength Warp | 3095N/5cm |
| | Break Strength Weft | 2789N/5cm |
| | Tear Strength Warp | 613N |
| | Tear Strength Weft | 596N |
| | transmittance | |
| | permeability | |

| Spec | Properties | Average value |
|--------------------|---------------------|---------------|
| 1000D*1000D 6*6 | Weight | 500g |
| | Break Strength Warp | 3095N/5cm |
| | Break Strength Weft | 2789N/5cm |
| | Tear Strength Warp | 613N |
| | Tear Strength Weft | 596N |
| | transmittance | |
| | permeability | |

color mesh

| Spec | Properties | Average value |
|----------------------|---------------------|---------------|
| 1000D*1000D 18*18 | Weight | 480g |
| | Break Strength Warp | 2365N/5cm |
| | Break Strength Weft | 1850N/5cm |
| | Tear Strength Warp | 272N |
| | Tear Strength Weft | 228N |
| | transmittance | |
| | permeability | |

| Spec | Properties | Average value |
|--------------------|---------------------|---------------|
| 500D*500D 18*18 | Weight | 210 ± 10g |
| | Break Strength Warp | 1273N/5cm |
| | Break Strength Weft | 1074N/5cm |
| | Tear Strength Warp | 187N |
| | Tear Strength Weft | 132N |
| | transmittance | |
| | permeability | |

| Spec | Properties | Average value |
|----------------------|---------------------|---------------|
| 1000D*1300D 10*13 | Weight | 200 ± 10g |
| | Break Strength Warp | 1444N/5cm |
| | Break Strength Weft | 740N/5cm |
| | Tear Strength Warp | 339N |
| | Tear Strength Weft | 149N |
| | transmittance | |
| | permeability | |

| Spec | Properties | Average value |
|--------------------|---------------------|---------------|
| 840D*500D 10*11 | Weight | 450 ± 20g |
| | Break Strength Warp | 2687N/5cm |
| | Break Strength Weft | 1983N/5cm |
| | Tear Strength Warp | 144N |
| | Tear Strength Weft | 287N |
| | transmittance | |
| | permeability | |

| Spec | Properties | Average value |
|------------------------|---------------------|---------------|
| 1000D*1000D 4.5*4.5 | Weight | 170 ± 10g |
| | Break Strength Warp | 582N/5cm |
| | Break Strength Weft | 437N/5cm |
| | Tear Strength Warp | 155N |
| | Tear Strength Weft | 186N |
| | transmittance | |
| | permeability | |

| Spec | Properties | Average value |
|--------------------|---------------------|---------------|
| 1000D*1000D 9*9 | Weight | 240 ± 10g |
| | Break Strength Warp | 1123N/5cm |
| | Break Strength Weft | 1033N/5cm |
| | Tear Strength Warp | 115N |
| | Tear Strength Weft | 213N |
| | transmittance | |
| | permeability | |

| Spec | Properties | Average value |
|--------------------|---------------------|---------------|
| 1000D*1000D 9*9 | Weight | 240 ± 10g |
| | Break Strength Warp | 946N/5cm |
| | Break Strength Weft | 917N/5cm |
| | Tear Strength Warp | 242N |
| | Tear Strength Weft | 110N |
| | transmittance | |
| | permeability | |

| Spec | Properties | Average value |
|----------------------|---------------------|---------------|
| 1000D*1000D 12*12 | Weight | 120g |
| | Break Strength Warp | 1250N/5cm |
| | Break Strength Weft | 1250N/5cm |
| | Tear Strength Warp | 300N |
| | Tear Strength Weft | 310N |
| | transmittance | 37% |
| | permeability | 2711mm/s |

color mesh

| Spec | Properties | Average value |
|--------------------|---------------------|---------------|
| 500D*500D 11*11 | Weight | 300 ± 20g |
| | Break Strength Warp | 2070N/5cm |
| | Break Strength Weft | 2045N/5cm |
| | Tear Strength Warp | 116N |
| | Tear Strength Weft | 102N |
| | transmittance | |
| | permeability | |

| Spec | Properties | Average value |
|--------------------|---------------------|---------------|
| 1000D*1000D 8*7 | Weight | 500 ± 20g |
| | Break Strength Warp | 2495N/5cm |
| | Break Strength Weft | 3025N/5cm |
| | Tear Strength Warp | 355N |
| | Tear Strength Weft | 420N |
| | transmittance | 21.00% |
| | permeability | 1978.7mm/s |

| Spec | Properties | Average value |
|----------------------|---------------------|---------------|
| 1500D*1500D 14*14 | Weight | 175g |
| | Break Strength Warp | 2577N/5cm |
| | Break Strength Weft | 2080N/5cm |
| | Tear Strength Warp | 356N |
| | Tear Strength Weft | 406N |
| | transmittance | 32.00% |
| | permeability | 2900mm/s |

| Spec | Properties | Average value |
|--------------------|---------------------|---------------|
| 840D*840D 10*11 | Weight | 500 ± 20g |
| | Break Strength Warp | 3321N/5cm |
| | Break Strength Weft | 3375N/5cm |
| | Tear Strength Warp | 240N |
| | Tear Strength Weft | 290N |
| | transmittance | 19.00% |
| | permeability | 1450mm/s |

| Spec | Properties | Average value |
|--------------------|---------------------|---------------|
| 1000D*1000D 9*9 | Weight | 500 ± 20g |
| | Break Strength Warp | 2665N/5cm |
| | Break Strength Weft | 2856N/5cm |
| | Tear Strength Warp | 243N |
| | Tear Strength Weft | 253N |
| | transmittance | |
| | permeability | |



PVC

heavy-duty mesh fabric materials are widely used



GSTARP

Printable :

The fabric has the feature of printable, making it widely used in advertising industry, it can print LOGO according to customer's requirements.

Color fastness:

Imported pigments are added for sg fabric in the production process, with anti-UV additives, it forms a stable polymer compounds, can maintain this color, and will not fade in the direct light of the eye and hot and humid environment for a long time.

Safety:

Corrosion resistance, no harmful substances, very small deformation rate, anti-static, flame retardant heat insulation, very safe.

Aging preventing:

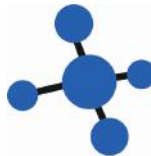
PVC fabric production process is advanced, FILE and and basically formed a stable structure, stable polymer compounds making it not prone to be eroded, the surface of the special treatment, there is a very good anti-aging effect, can be used for 10-15 years.



light tight



welding



Solid Colors



Easy to clean



long-life

Jiaxing Green Shield New Materials Co., Ltd
Mobile: 0086 13625863196
WhatsApp: 0086 13625863196

Add : No.365 West Qianjiang Road, Haining, Zhejiang, China
e-mail : bill@gstarp.com
WEB: www.gstarp.com